



FEATURES:

- Fluorescent luminaire with direct or direct-indirect lighting distribution.
- Lamp source: T5 Fluorescent.
- Direct lighting distribution is provided with specular aluminum reflector or by optional opal diffusor.
- Up light can be achieved by using acrylic strips on top panel.
- Suitable for surface, suspended and row mounted installations.
- Housing is made from 18Ga rolled steel.
- Has a proven record in office, commercial and retail applications.
- Custom modifications are available.
- ED luminaires are certified to CSA and UL standards.

SPECIFICATION:

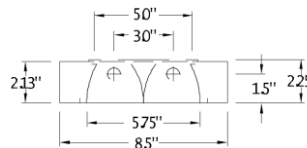
ED TWIN

LAMPS	VOLTAGE	BALLAST	FINISH	LOUVER	DISTRIBUTION
2X25W T5	120V	ST - Standard	SF - Surface	AL - Aluminum	DL - Down Light
2X28W T5	277V	IS - Instant Start	AC - Aircraft	OP - Opal	D/U - Down /Up
2X49W T5	347V	RS -Rapid Start			
2X54W T5		HO - High Output			
		DM - Dimming			
		DL - DALI			

DIMENSIONS:

SUSPENDED

Length:	48"
Width:	8 1/2"
Depth:	2 3/8"



OPTIONS:

OPAL



DOWN/UP



Project:

Type:

Edison Lighting Group Ltd.

1303 Ringwell Dr. Unit #2, Newmarket, ON L3Y 8T9

Tel: 905-830-0339 or 1-800-667-9281 Fax: 905-898-6439 or 1-800-667-9302

www.edisonlighting.ca info@edisonlighting.ca