

FEATURES:

- ✓ Architectural linear luminaire with direct or direct/indirect distribution.
- ✓ Light source: LED board or LED strip.
- ✓ Even illumination is provided by a variety of high efficiency optic lenses.
- ✓ Available for row-mounted installations in various lengths.
- ✓ Suitable for surface, suspended, recessed or wall mounted installations.
- ✓ Extruded aluminum body comes with a standard black or white finish.
- ✓ Also available with various custom color options.
- ✓ LED sources are rated for 60,000 hrs. L80 with +90 CRI.
- ✓ Has a proven record in office, commercial and retail installations.
- ✓ Custom modifications are available.
- ✓ ED luminaires are certified to CSA and UL standards.

reinventlight

SPECIFICATION:

ED VECTOR+ — — — — — — — — —

Enter the Product Code into the boxes above.

SIZE

____ Ft*
*1-8 Ft
Continuous Run
(0.5 Ft Increments)

SOURCE

- ☐ 5 W/Ft
- ☐ 7 W/Ft
- ☐ 10 W/Ft

RADIANCE

- ☐ DD - Direct (100%Down)
- ☐ ID - Indirect (100%Up)
- ☐ UD - Uneven (70%Down/30%Up)**

*Light distribution.
**Not available for sizes shorter than 4 Ft.

VOLTAGE

- ☐ UNV - (120/277V)
- ☐ 347V*

*Not available for all configurations.

DRIVER

- ☐ ST - On/Off
- ☐ DL - 0-10V Dim (1%)
- ☐ DLO - 0-10V Dim (to Off)
- ☐ DL2 - 0-10V Dim (TW)
- ☐ DA4 - DALI D4i
- ☐ DMX - DMX RGBW
- ☐ EM - Emergency Driver*
- ☐ **

*Battery Pack min. 4 Ft section.
**Specify dimming protocol.

MOUNTING

- ☐ S6W - 6Ft Cord WH*
- ☐ S6B - 6Ft Cord BK*
- ☐ S Ft**
- ☐ WM - Wall Mount
- ☐ WF - Wall Flush
- ☐ SF - Surface Mount
- ☐ RT - Recessed Trimless

*Canopy will match the Cord color.
**Specify Suspension length and color.

LENS

- ☐ OP - Opal
- ☐ AS - Asymmetric
- ☐ PR - Prismatic

FINISH

- ☐ BK - Black*
- ☐ WH - White**
- ☐ CF/RAL ***

*RAL 9005
**RAL 9016
***Specify required RAL number.

CCT

- ☐ 30K - 3000 Kelvin/90CRI
- ☐ 35K - 3500 Kelvin/90CRI
- ☐ 40K - 4000 Kelvin/90CRI
- ☐ RGBW
- ☐ TW - Tunable White*
(2700K-6500K)
- ☐ **

*Available with 0-10V, Dali or Bluetooth controls.
**Specify required CCT.

OPTIONS

- ☐ No Options*
- ☐ DR - Damp Rated
- ☐ DC - Dual Circuit**
- ☐ CB - Casambi/Bluetooth
- ☐ JD - JDRF Autonomy Sensor
- ☐ DOS - Daylight & Occupancy Sensor
- ☐ ***

*Leave empty.
**Control Downlight/Uplight separately.
***Specify required option.

LUMEN OUTPUT W/Ft:

Watts	30K	35K	40K
5W	515 lm	525 lm	535 lm
7W	720 lm	735 lm	750 lm
10W	1030lm	1050 lm	1080 lm

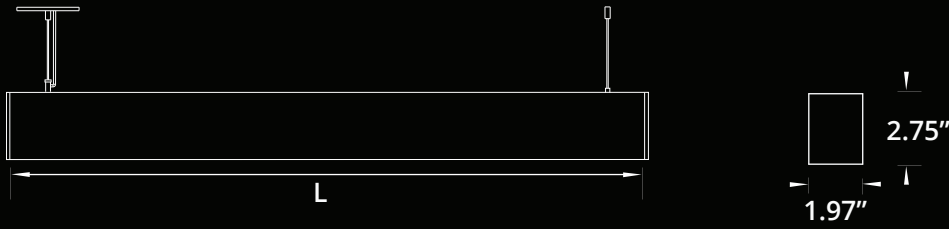


Declare.

Project:

Type:

SIZE:



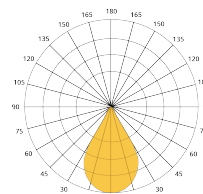
Size	L (Extrusion Length)
1 Ft	11.50 In
2 Ft	24.25 In
3 Ft	35.25 In
4 Ft	48.00 In
5 Ft	59.00 In
6 Ft	71.75 In
7 Ft	82.75 In
8 Ft	95.50 In

Total length with endcaps = L + 0.22"

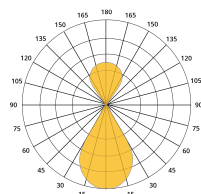
CONTINUOUS RUN:



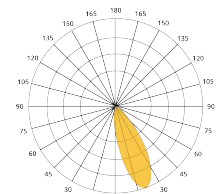
RADIANCE:



Direct Distribution

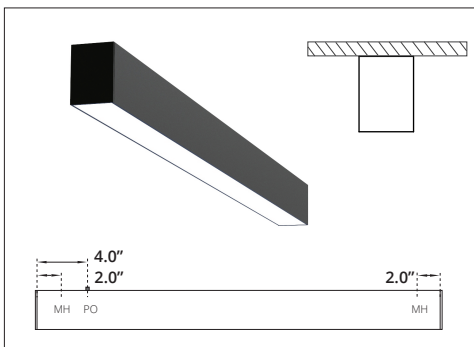


Uneven Distribution



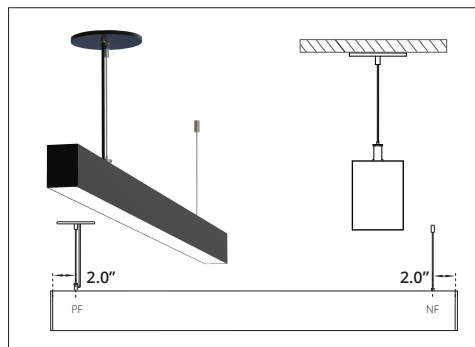
Asymmetric

MOUNTING:



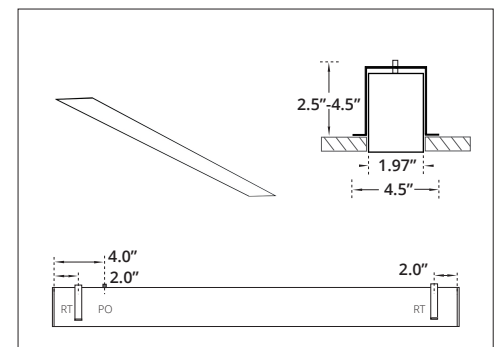
SURFACE MOUNT

MH - Mounting Hole
PO - Power Opening



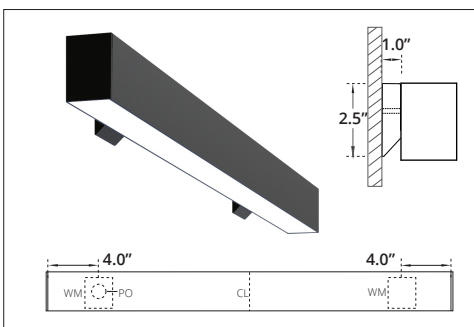
SUSPENDED

PF - Power Feed
NF - Non Power Feed



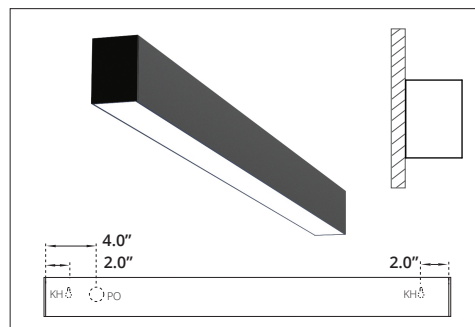
RECESSED TRIMLESS

RT - Recessed Trimless Bracket
PO - Power Opening
*Cutout Dimensions = Total Length x Width of Extrusion.



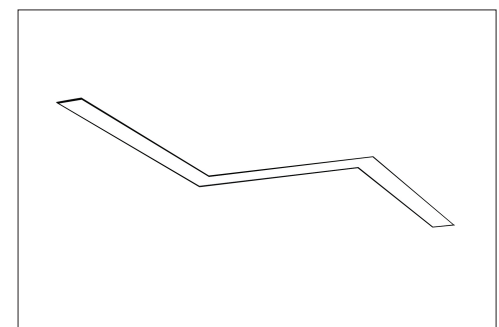
WALL MOUNT

PO - Power Opening
WM - Wall Mount Bracket
*1-3 Ft, Single Wall Mount Bracket with Power Opening in the centre.



WALL FLUSH

KH - Key Hole
PO - Power Opening



VARIABLE ANGLE

60°, 90°, 120°, 135° or Custom.