

### FEATURES:

- ✓ Architectural sound absorbing Eco Felt Acoustic panel.
- ✓ Polyester material made from 70% recyclable plastic.
- ✓ Available in various sizes and thicknesses.
- ✓ Custom designs are available.
- ✓ Lightweight panel comes with standard 20 color options.
- ✓ Layering or wood grain print decals are available.
- ✓ Customized 2D or 3D pattern designs and shapes.
- ✓ Class 1 Fire Rated with 0.7 Noise Reduction Coefficient / 1" Acoustic.
- ✓ Suitable for suspended, wall or ceiling installations.
- ✓ Has a proven record in office, commercial and hospitality environments.

reinventlight

### SPECIFICATION:

#### Sonic BAFFLE

TYPE	WIDTH	HEIGHT	SIZE	SHAPE	MOUNTING	FINISH
<input type="text"/>	<input type="text"/>	<input type="text"/>	<input type="text"/>	<input type="text"/>	<input type="text"/>	<input type="text"/>

Enter the Product Code into the boxes above.

#### TYPE

- ☐ VB - Vertical Baffle

#### WIDTH

- ☐ A - 1/2 in  
☐ B - 1 in  
☐ C - 2 in  
☐ D - 3 in

#### HEIGHT

- ☐ 12 in  
☐ 16 in  
☐ 24 in  
☐   
 Specify required height.

#### SIZE

- ☐ 4 ft  
☐ 6 ft  
☐ 8 ft  
☐   
 Specify required size.

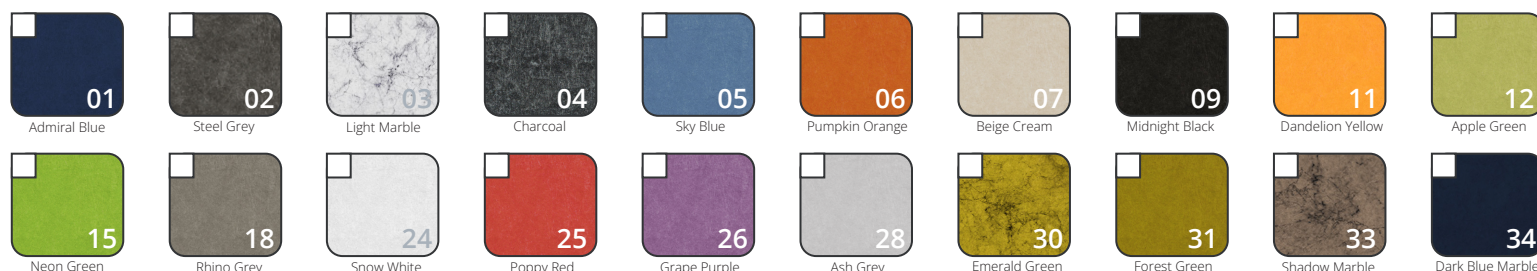
#### SHAPE

- ☐ RC - Rectangle Shape  
☐ <sup>1</sup>  
 1. Please refer to 2nd page.

#### MOUNTING

- ☐ S4-Suspension 4 ft  
☐ S6-Suspension 6ft  
☐ S  ft<sup>1</sup>  
☐ WM - Wall Mount  
☐ CM - Ceiling Mount  
 1. Please specify required Length.

### ACOUSTIC FINISH



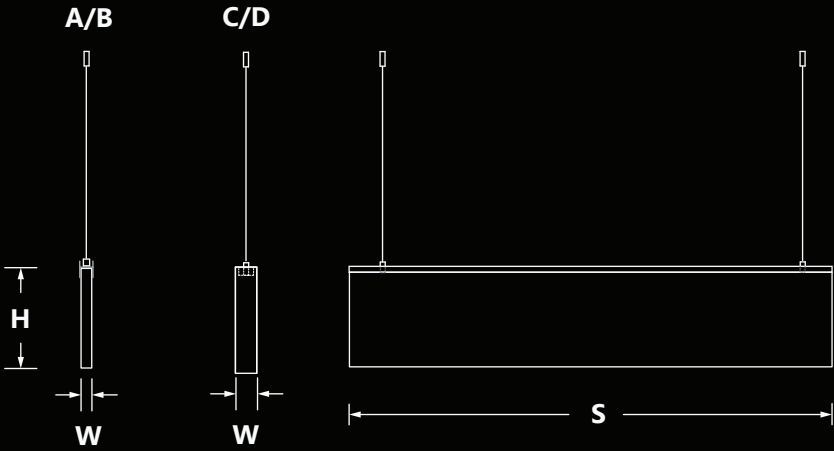
Project:

Type:



Declare.

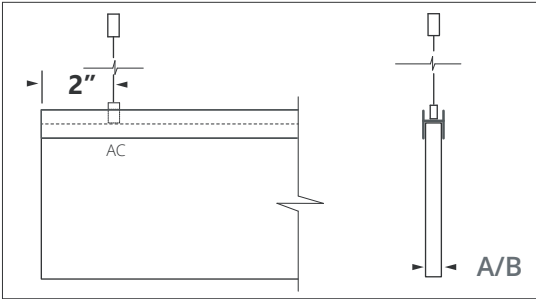
SIZE:



W-Width	H-Height	S-Size
A - 0.50 in	12 in = 11.75 in	4 ft = 47.75 in
B - 1.00 in	16 in = 15.75 in	6 ft = 71.75 in
C - 2.00 in	24 in = 23.75 in	8 ft = 95.75 in
D - 3.00 in		

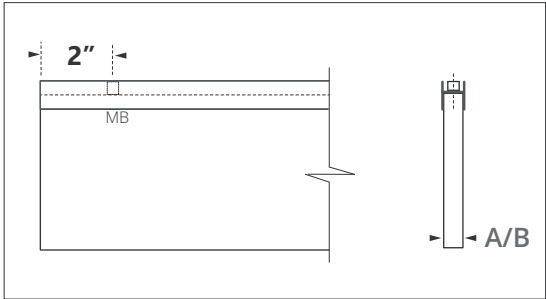
Width A & B comes with Matel Channel.

MOUNTING:



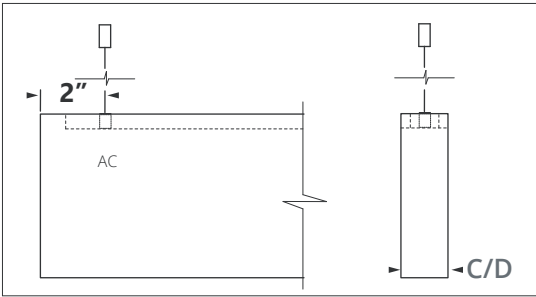
SUSPENDED - A & B

AC - Aircraft Cable with Metal Channel



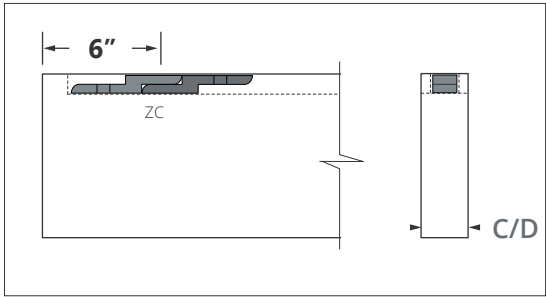
CEILING MOUNT - A & B

MB - Mounting Bracket slides in Metal Channel



SUSPENDED - C & D

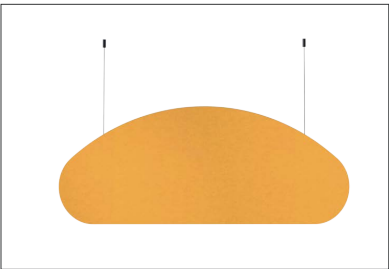
AC - Aircraft Cable



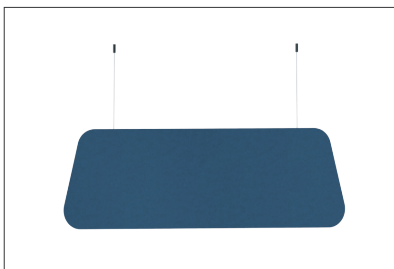
CEILING MOUNT - C & D

ZC - Zee Clip

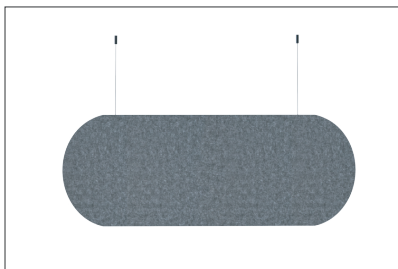
CUSTOM SHAPE:



CS - CLOUD #11



TS - TRAPEZOID #01



OS - OVAL #04