

FEATURES:

- ✓ Architectural linear luminaire with direct or direct/indirect distribution.
- ✓ Light source: LED board or LED strip.
- ✓ Even illumination is provided by a high efficiency opal lens.
- ✓ Available for row-mounted installations in various lengths.
- ✓ Suitable for surface, suspended, recessed or wall mounted installations.
- ✓ Extruded aluminum body comes with a standard black or white finish.
- ✓ Also available with various custom color options.
- ✓ LED strips are rated for 60,000 hrs. L80 with +90 CRI.
- ✓ Has a proven record in office, commercial, and retail installations.
- ✓ Custom modifications are available.
- ✓ ED luminaires are certified to CSA and UL standards.

reinventlight

SPECIFICATION:

ED VECTOR1+

Enter the Product Code into the boxes above.

SIZE

_____ Ft*
*1-8 Ft.
Continuous Run
(0.5 feet Increments)

SOURCE

- ☐ 5 W/Ft
☐ 7 W/Ft
☐ 10 W/Ft

RADIANCE

- ☐ DD - Direct (100%Down)
☐ UD - Uneven (70%Down/30%Up)**
*Light distribution.
**Not available for sizes shorter than 4 Ft.

VOLTAGE

- ☐ UNV - (120/277V)
☐ 347V*
*Not available for all configurations.

DRIVER

- ☐ ST - On/Off
☐ DL - 0-10V Dim (1%)
☐ DLO - 0-10V Dim (to Off)
☐ DL2 - 0-10V Dim (TW)
☐ DA4 - DALI D4i
☐ DMX - DMX RGBW
☐ EM - Emergency Driver*
☐ **

*Battery Pack min. 4 Ft section.
**Specify dimming protocol.

MOUNTING

- ☐ S6W - 6 Ft Cord WH*
☐ S6B - 6 Ft Cord BK*
☐ S Ft**
☐ WM - Wall Mount
☐ WF - Wall Flush
☐ SF - Surface Mount
☐ RT - Recessed Trimless
*Canopy will match the Cord color.
**Specify Suspension length and color.

LENS

- ☐ OP - Opal

FINISH

- ☐ BK - Black*
☐ WH - White**
☐ CF/RAL ***
*RAL 9005
**RAL 9016
***Specify required RAL number.

CCT

- ☐ 30K - 3000 Kelvin/90CRI
☐ 35K - 3500 Kelvin/90CRI
☐ 40K - 4000 Kelvin/90CRI
☐ RGBW
☐ TW - Tunable White*
(2700K-6500K)
☐ **
*Available with 0-10V, Dali or Bluetooth controls.
**Specify required CCT.

OPTIONS

- ☐ No Options*
☐ DR - Damp Rated
☐ DC - Dual Circuit**
☐ CB - Casambi/Bluetooth
☐ JD - JDRF Autonomy Sensor
☐ DOS - Daylight & Occupancy Sensor
☐ ***
*Leave empty.
**Control Downlight/Uplight separately.
***Specify required option.

LUMEN OUTPUT W/Ft:

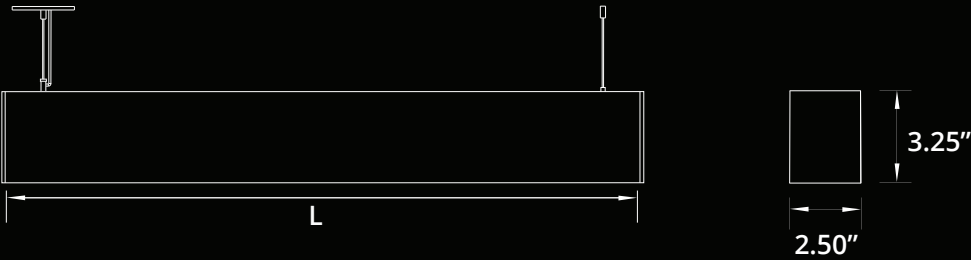
Watts	30K	35K	40K
5W	515 lm	525 lm	535 lm
7W	720 lm	735 lm	750 lm
10W	1030lm	1050 lm	1080 lm



Project:

Type:

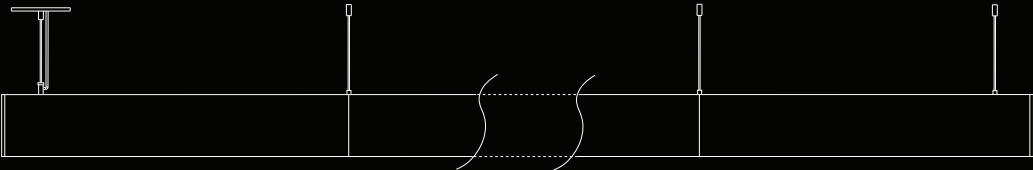
SIZE:



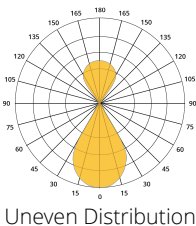
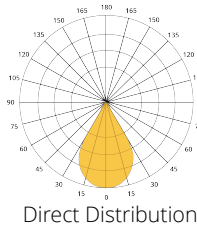
Size	L (LENGTH)
1 Ft	11.50 In
2 Ft	24.25 In
3 Ft	35.25 In
4 Ft	48.00 In
5 Ft	59.00 In
6 Ft	71.75 In
7 Ft	82.75 In
8 Ft	95.50 In

Total length with endcaps = L + 0.22"

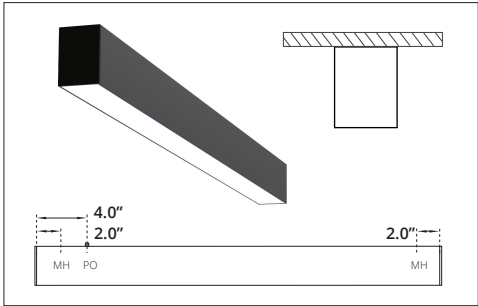
CONTINUOUS RUN:



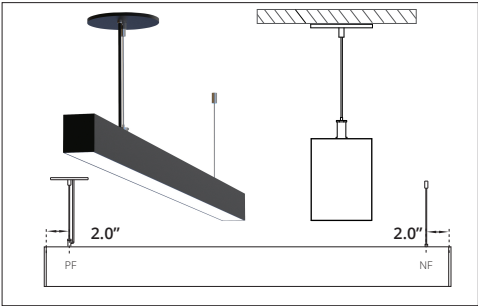
RADIANCE:



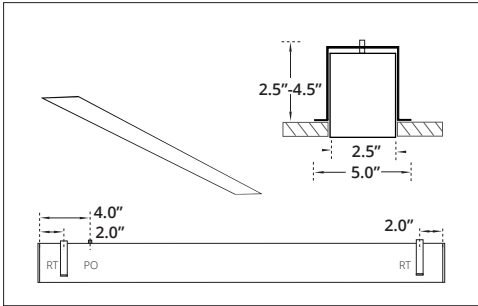
MOUNTING:



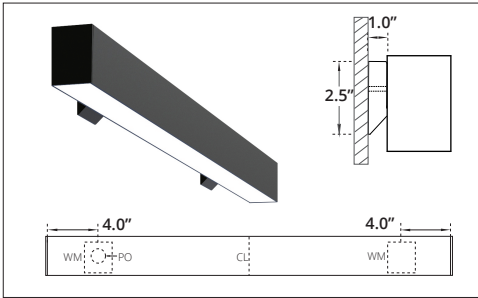
SURFACE MOUNT
 MH - Mounting Hole
 PO - Power Opening



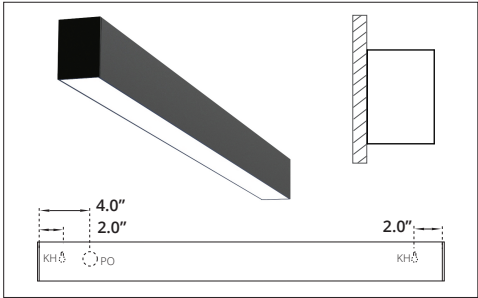
SUSPENDED
 PF - Power Feed
 NF - Non Power Feed



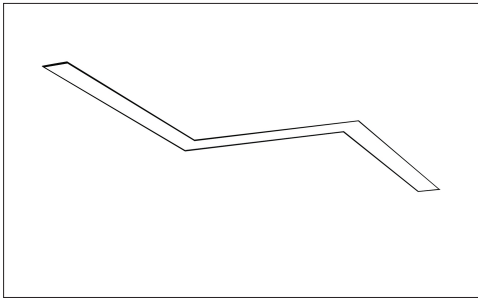
RECESSED TRIMLESS
 RT - Recessed Trimless Bracket
 PO - Power Opening
 *Cutout Dimensions = Total Length x Width of Extrusion.



WALL MOUNT
 PO - Power Opening
 WM - Wall Mount Bracket
 *1-3 Ft, Single Wall Mount Bracket with Power Opening in the centre.



WALL FLUSH
 KH - Key Hole
 PO - Power Opening



VARIABLE ANGLE
 60°, 90°, 120°, 135° or Custom.